

## General guideline for sliding gate installation

This guide does not take into account factors that may impact the measurements provided, please use as a reference and compare to your site.

Since 7th of June 2024 fasteners are supplied with **MOST Gate + Automation Packages**, you can check the supplied contents of any package by clicking the "kit contents tab" on the specific package. Individual hardware items or hardware packages are not supplied with the fixings however they are available to be purchased in packs. This guide is written around the basis of metal post & concrete strip footing IF you are working outside of this scope please substitute with the appropriate fasteners.

### Masonry Anchor Nail



1m Section Length - 8x Knock Ins  
2m Section Length- 12x Knock Ins  
3m Section Length - 20x Knock Ins

Use Hammer Drive Masonry Anchor Nails  
M6 x 38mm Part No: KIN-6-38  
Drill size: 6.5mm

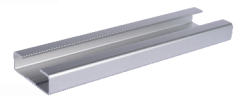
### Metal Tek 6mm



2x screws



2x screws



2x screws



2x screws

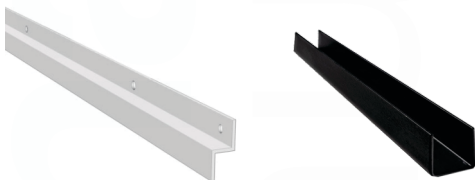


2x screws



Use Metal Tek Self Drilling Screw M6 x 25mm Part No: TEK-6-25mm

### Self Drilling Metal Screw 4mm



1m Section Length - 4x Screws  
2m Section Length- 8x Screws  
3m Section Length - 11x Screws



Use Metal Self Drilling Screw  
M4 x 19mm Part No: SD-4-19mm

### Super Tek 8mm



4x screws



2x screws



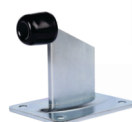
2x screws



4x screws



Use Super Tek Self Drilling Screw  
M8 x 40mm Part No: TEK-8-40mm



NOT SUPPLIED WITH KITS

Use Expansion Bolt M10 x 60mm  
Part No: EXPANSION-M10-60

Gate Wheel Deduction (Fabrication)

Z Is the deduction for fabrication (Bottom of gate tube to Concrete) Including track

Internal Recess Mount Wheel

External Surface Mount Wheel

Part No    Z

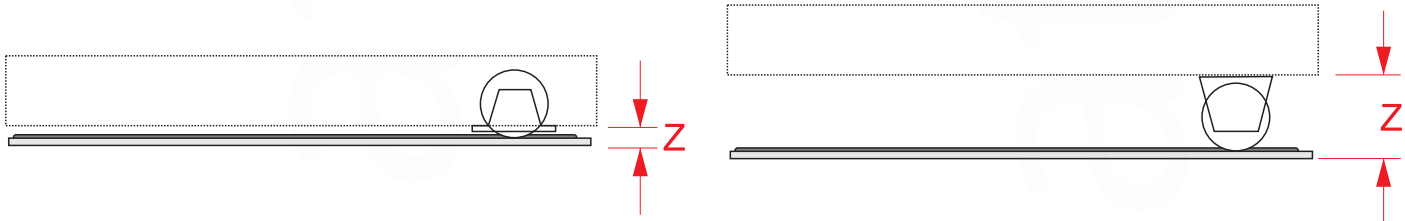
IRM-78A    35mm

IRM-88A    32mm

Part No    Z

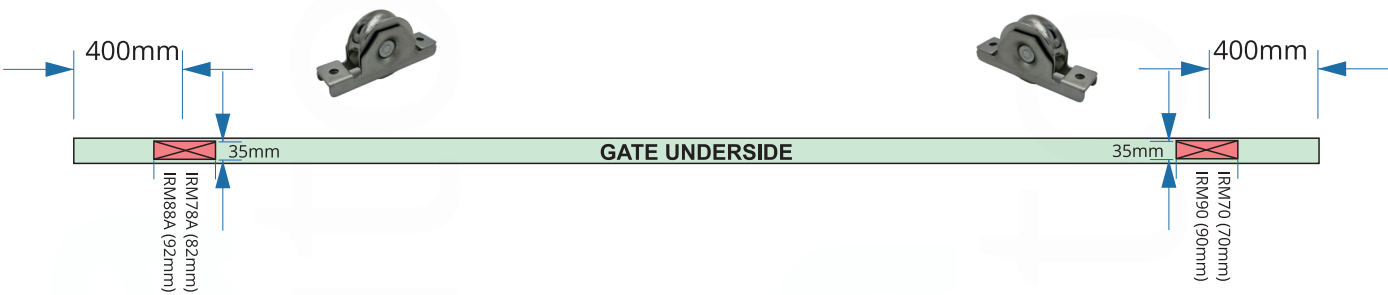
ESM-70A    85mm    Use the Titan Riser System

ESM-90A    105mm    Use the Titan Riser System





Gate Wheel Positioning and Cut Out

Internal Recess Mount Wheel



External Surface Mount Wheel

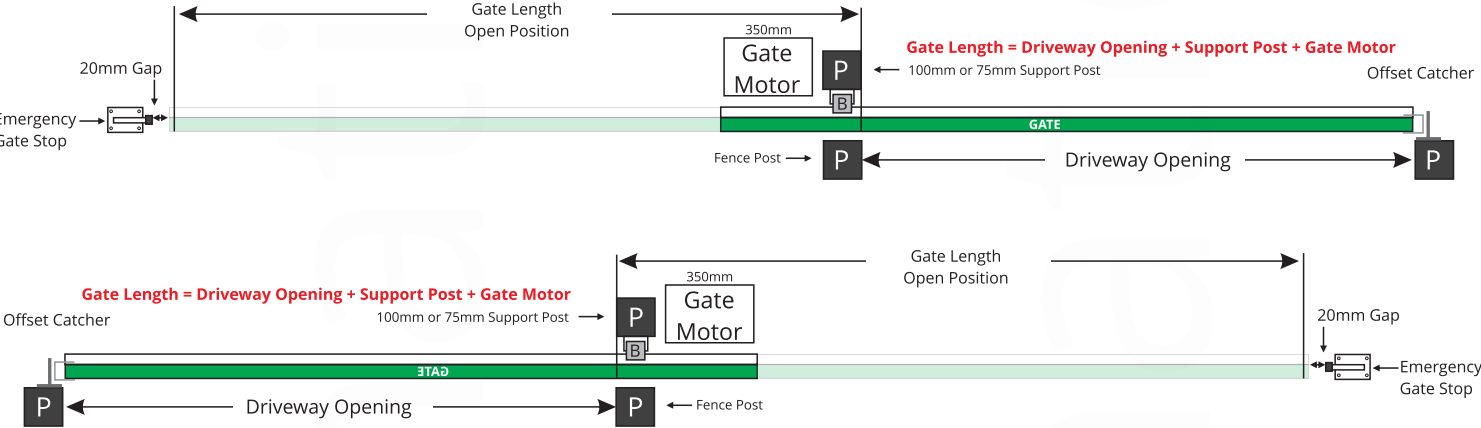
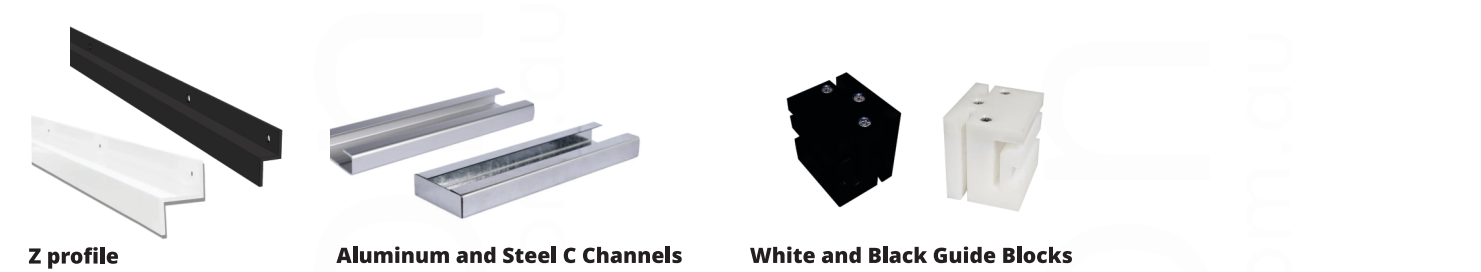




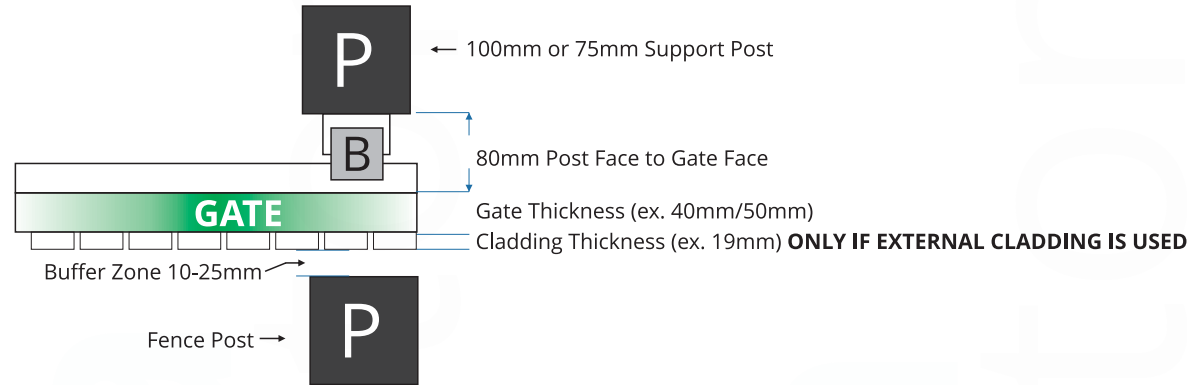
A sliding gate motor must be raised to accommodate the external wheel height, ensure the use of a riser system!

Part No: Titan-Riser

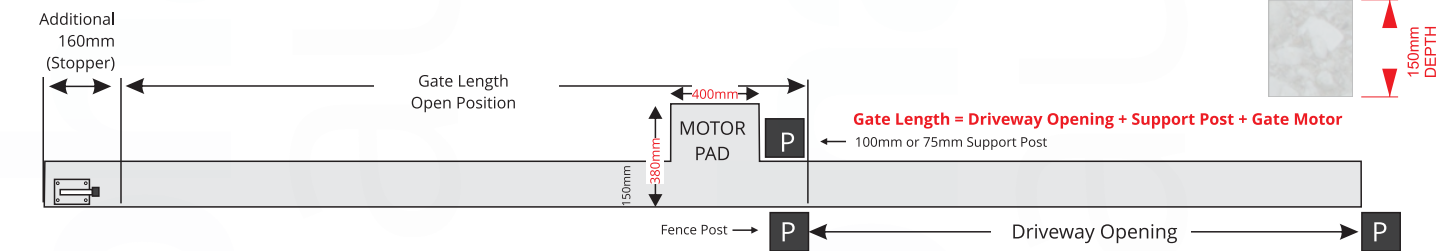
# Gate System Installation (Z profile with Nylon Block Method)



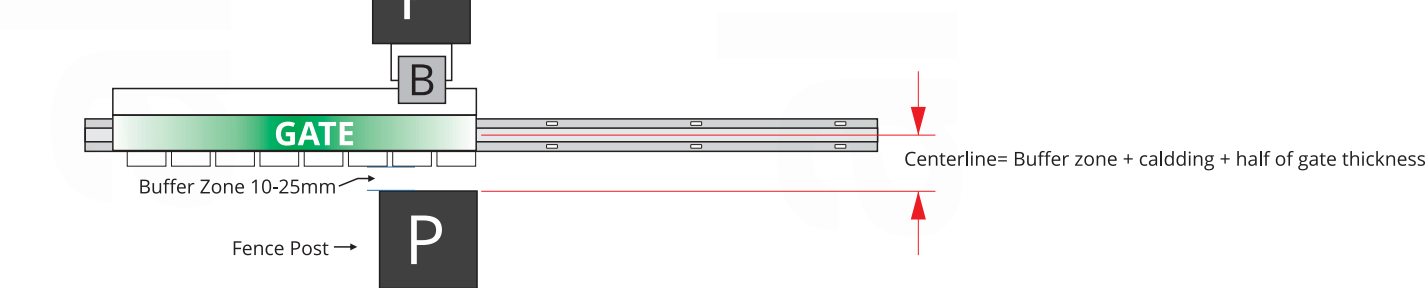
## Support Post Positioning



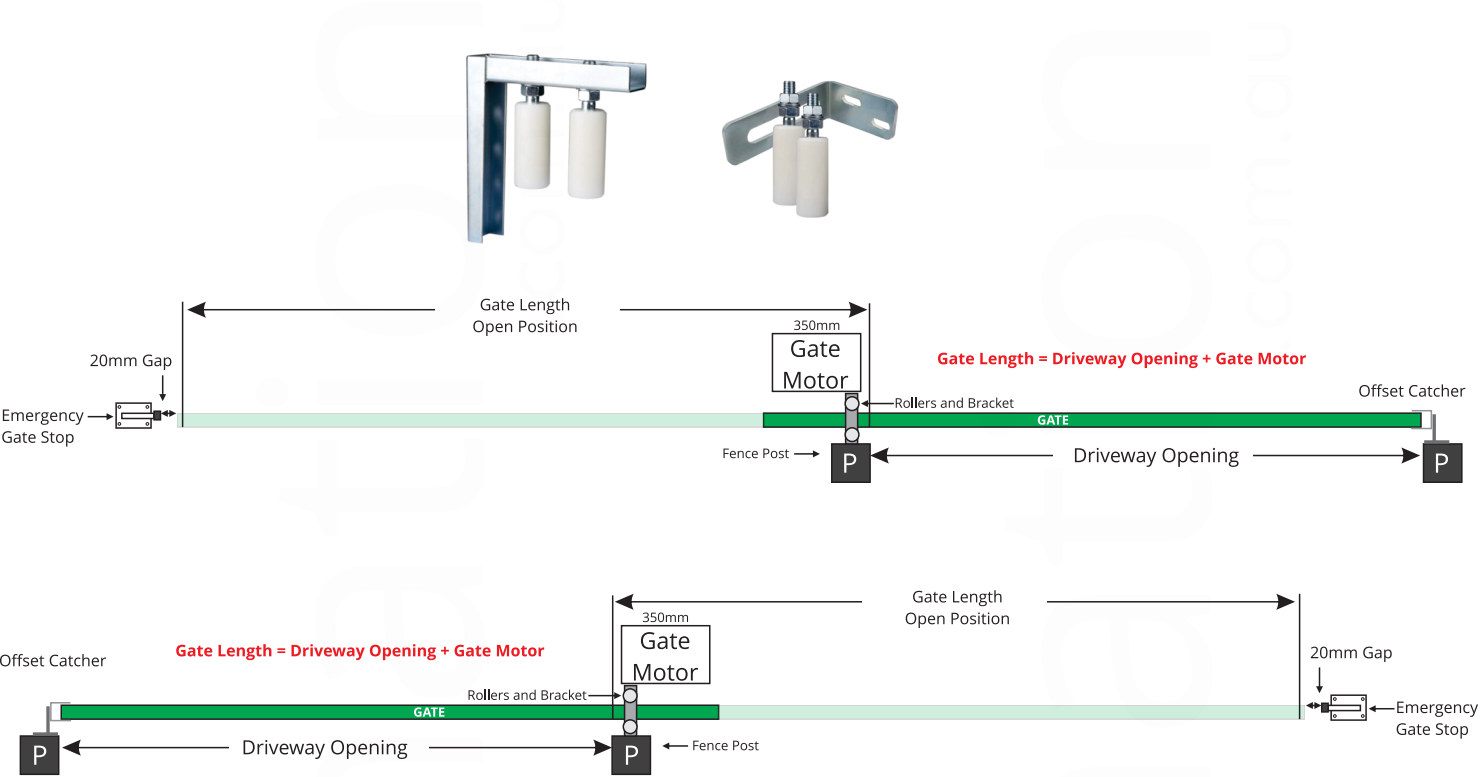
## Concrete Guideline



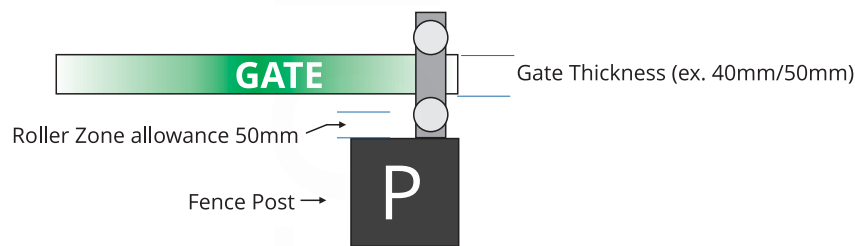
## General Track Position



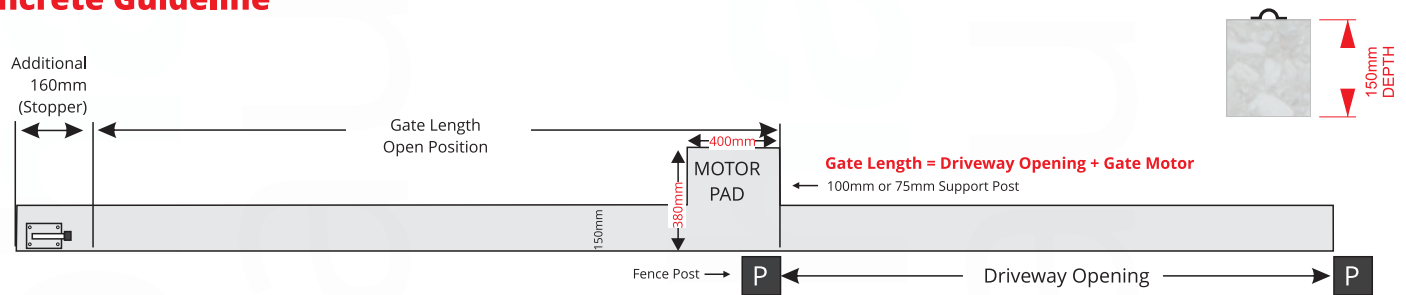
# Gate System Installation (Roller and Bracket Method)



## Support Post Positioning



## Concrete Guideline



## General Track Position

